



GENEVA



PHOTOS BY JESSIE KING | For The Courier News

Mike Vandermier (front) of Elgin and John Crotty of Roselle paint a patient room in the new addition at Delnor Hospital in Geneva. The addition will include 64 more patient rooms "that look more like an upscale hotel," according to Mark Larson, team leader for construction management at the hospital. Among other amenities, each room will be outfitted with patient lifts, kitchenettes and large windows.

Just like home

Delnor addition focuses on patients' comfort

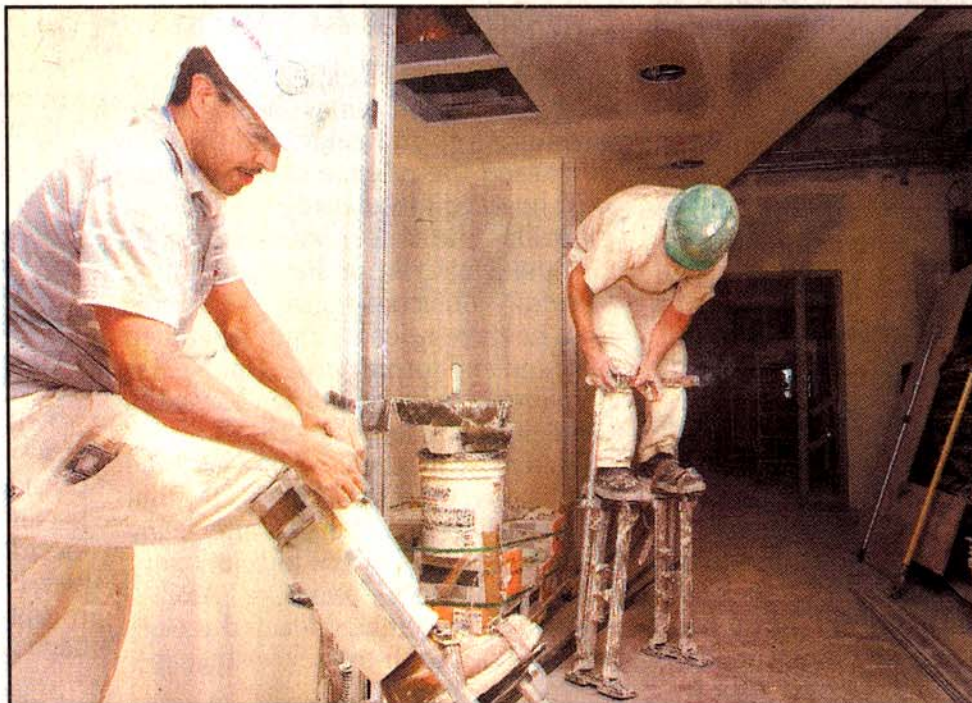
BY NICOLE BROOKS
Staff Writer

GENEVA — A lobby with fireplace and skylight. Bedroom walls painted warm earth tones and adorned with wood accents. High ceilings and large windows. Forty-two inch flat screen TVs. Ceramic tile in the bathrooms.

No, this is not a description of the amenities in the newest townhomes on Elgin's west side. These are features patients will find when they enter Delnor-Community Hospital's new 100,000 square foot wing, currently under construction at the hospital campus, 300 Randall Road, and set to open June 1.

"We want it to be as good as anybody would have at their house," said construction project manager Mark Larson, during a walk-through Wednesday of the largest addition the hospital has built since it opened in 1991.

The west-side wing will have two surgical suites, private patient rooms and space for upgraded radiology equipment. In accommodating a growing population with a larger hospital and expanded services, Delnor officials have as a top priority a healing environment that makes patients and family members feel like they're at home.



Ricardo Magama (left) of Chicago and an unidentified worker strap on stilts in order to plaster and sand drywall in out-of-reach places in the new addition at Delnor Hospital in Geneva.

"Part of our philosophy is that the support of family members to the patient contributes to their healing," said Kate Monteleone, chief development officer.

To that end, patient rooms will have fold-out sofas and Wi-Fi Internet. A lounge will provide a stove so family and friends can cook meals. A resource

center stocked with computers will be available for research and to check e-mail.

And all of it will be designed to promote a soothing, comforting atmosphere, Lynne Casey, senior marketing specialist, said.

CONTINUED FROM PAGE A1

HOME

"It's really about the experience. We don't want it to be a scary place."

The wing's three main floors will let in a lot of natural light, Larson said. A water feature will greet patients and visitors, and a balcony will bring a dose of fresh air.

"Studies have shown that patients are more comfortable and heal faster," in this type of environment, he said.

Delnor is a Planetree affiliate hospital, meaning the

hospital has adopted initiatives created by Planetree, a non-profit group that helps hospitals create healing environments that center care around the patient. Some Planetree programs Delnor has implemented include unlimited visiting hours, therapy dog visits and a butterfly garden.

The \$50 million addition is being funded in part by donations. The "Sophisticated Medicine Close to Home" fundraising campaign has a goal of \$10 million, and has raised a little more than \$8.5 million, Monteleone said.

On the Web
www.delnor.com